

Gearing up for the 2020 Census

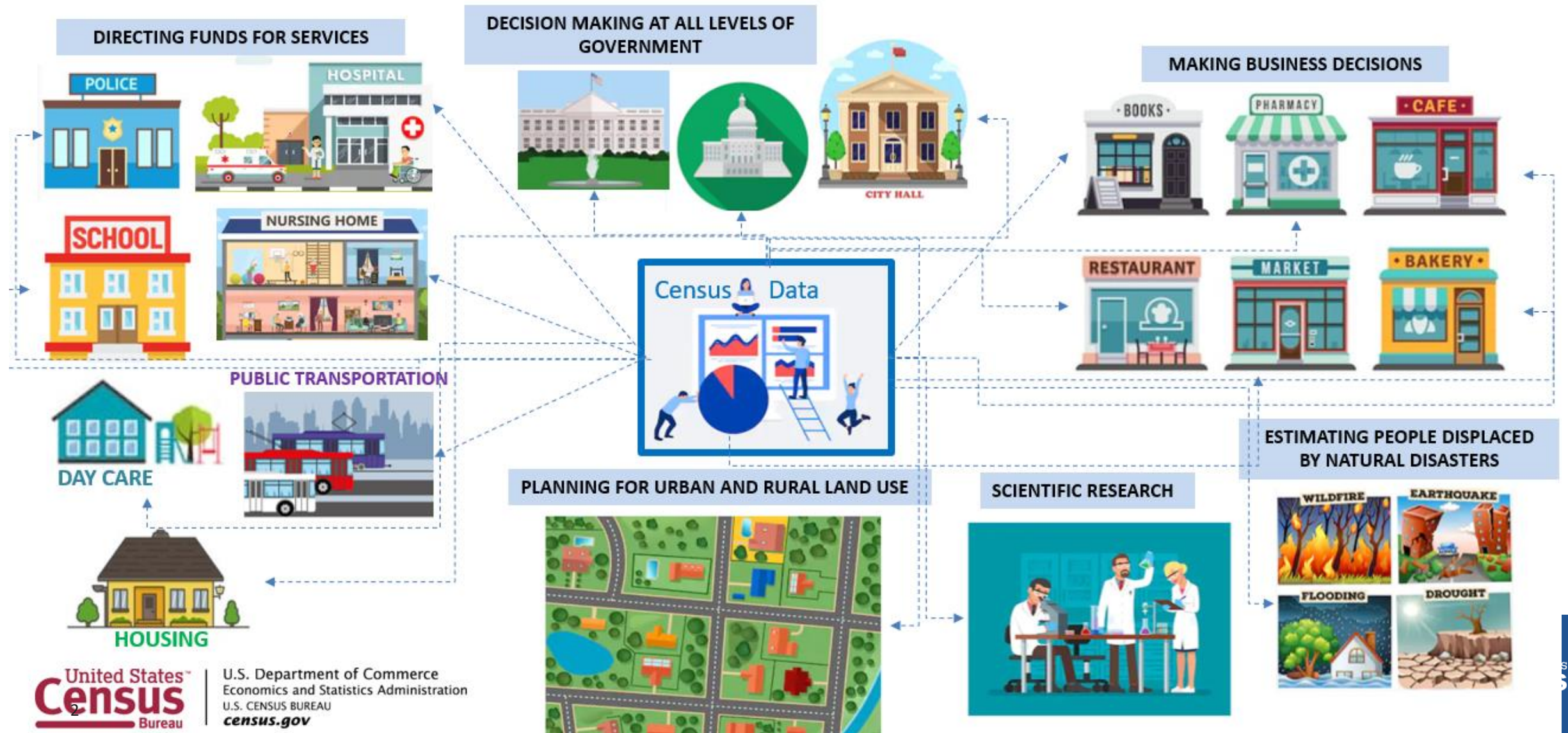


Presented By Vikki Patiño

Partnership Specialist, Northern California

U.S. Census Bureau, Los Angeles Regional Census Center

Census Data is Important

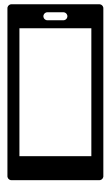


Your Answers are Protected by Law

Title 13 of the U.S. Code

- The Census is confidential and is required by law
- Results of the Census are reported only in statistical format
- We do not share respondents' personal information or their responses with any other government agencies
- All Census employees are sworn to a lifetime oath to protect respondent information
- Penalties for wrongful disclosure: up to five years imprisonment and/or a fine of \$250,000

New Method to Self Respond Starting March 12, 2020



Internet



Phone



Paper Form



In-person

****12 languages plus English will be supported***

WHAT WE WILL SEND IN THE MAIL

On or between	You'll receive:
March 12-20	An invitation to respond online to the 2020 Census. (Some households will also receive paper questionnaires.)
March 16-24	A reminder letter.
	If you haven't responded yet:
March 26-April 3	A reminder postcard.
April 8-16	A reminder letter and paper questionnaire.
April 20-27	A final reminder postcard before we follow up in person.

We understand you might miss our initial letter in the mail.

- Every household that hasn't already responded will receive reminders and will eventually receive a paper questionnaire.
- It doesn't matter which initial invitation you get or how you get it—we will follow up in person with all households that don't respond.

Language Access - Supporting Linguistically Diverse Populations

Internet Self-Response (ISR) & Census Questionnaire Assistance (CQA)

- 12 Non-English Languages for Internet Self Response and 13 Non-English Languages for Census Questionnaire Assistance: Spanish, Chinese, Vietnamese, Korean, Russian, Arabic, Tagalog, Polish, French, Haitian Creole, Portuguese, Japanese

Language Guides (Video and Print) Language Glossaries Language Identification Card

- 59 Non-English Languages
- Language Guides include American Sign Language, braille, and large print

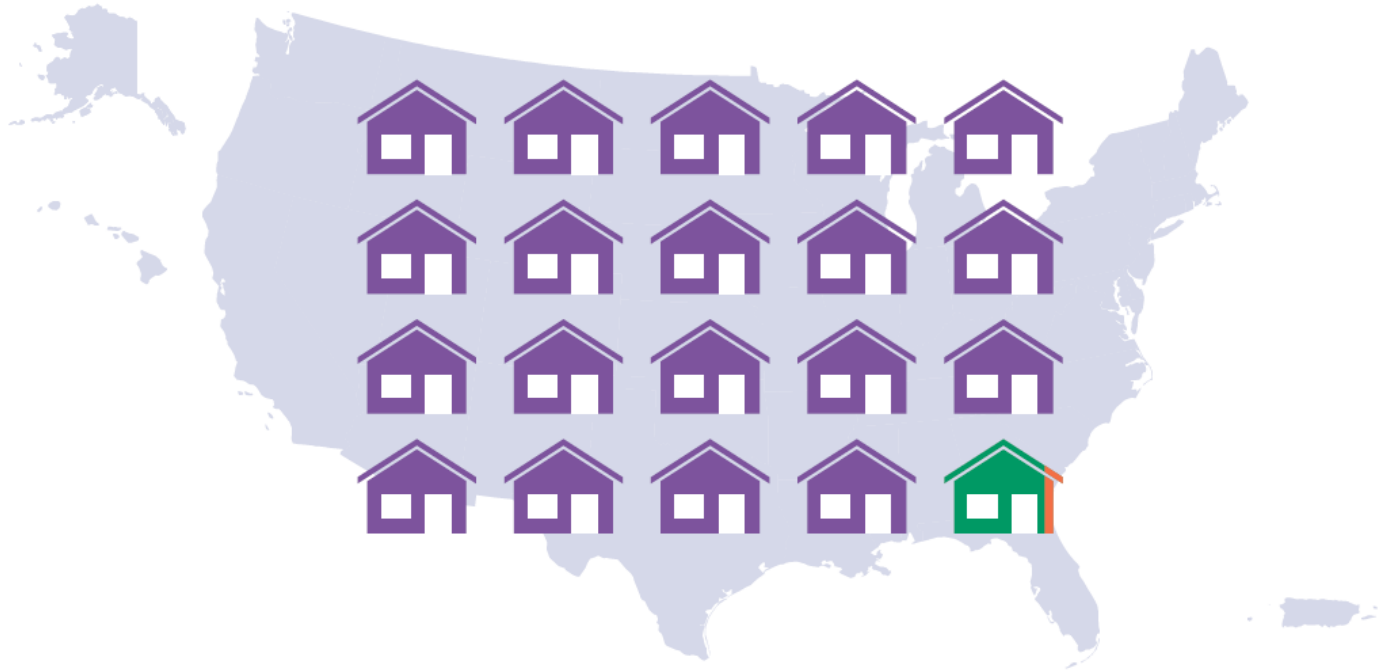
Paper Questionnaire & Mailing Materials Field Enumeration Instrument & Materials


- English and Spanish


How the 2020 Census will invite everyone to respond



 **95%** of households will receive their census invitation in the mail.



 **Almost 5%** of households will receive their census invitation when a census taker drops it off. In these areas, the majority of households may not receive mail at their home's physical location (like households that use PO boxes or areas recently affected by natural disasters).

 **Less than 1%** of households will be counted in person by a census taker, instead of being invited to respond on their own. We do this in very remote areas like parts of northern Maine, remote Alaska, and in select American Indian areas that ask to be counted in person.

2020 Census Questionnaire Questions

- Number of people living in housing unit
- Additional persons staying on April 1, 2020 not included above?
- House ownership or rental
- Telephone number
- Name of each person
- Gender of each person
- Age and birth date of each person
- Hispanic origin of each person
- Race of each person

Contact Information

Vikki Patiño
Partnership Specialist
Northern California

marta.v.patino@2020census.gov

(707) 309 1049

Los Angeles Regional Census Center
555 W. 5th St, 30th Floor
Los Angeles California, 90013